

Quick Start Guide VB-ARCHIVE Server



About This Quick Start Guide

This guide is for helping new customers get their Sencore VideoBRIDGE VB-ARCHIVE server setup and running as quickly and easily as possible.

The VB-ARCHIVE allows users to store video thumbnails, caption data, audio loudness data and other things for historical reference and lookup. The VB-ARCHIVE product requires both a VideoBRIDGE Controller (VBC) and VB7880 Advanced Content Extractor to be present in the system for normal operation.

The Sencore VB-ARCHIVE software is available with or without a bundled server. This Quick Start Guide is for users that purchase the server bundled with the VB-ARCHIVE software. In this case, the Linux OS and all the software necessary for the VB-ARCHIVE operation is already installed on the server chassis. Customers that purchase the VB-ARCHIVE software and intend to install it on their own server equipment should refer to the “VB Server Software Install Manual”.

Download the Full User’s Manual

The current versions of the full user’s manuals can be obtained from the Download tab of individual product pages on our website: www.sencore.com or by emailing Sencore ProCare support at procare@sencore.com.

Unpack the Equipment

Check that there are no signs of damage to equipment due to transport. If the equipment appears to be damaged, please contact Sencore ProCare for support.

In addition to the Sencore VB-ARCHIVE-SVR hardware itself, the box should include power cables and various rackmount hardware.

Equipment Installation and Power Up

The VB-ARCHIVE-SVR is designed for rack installation and should be securely connected to the rack using the included rack rails and screws suitable for the rack type. Note that there should be sufficient room for air to freely flow around the unit, ensuring proper cooling. The VB-ARCHIVE-SVR requires front-to-back airflow.

The VB-ARCHIVE-SVR is equipped with dual, redundant power supplies and it should be powered by connecting both power cables to power outlets. If one of the redundant power supplies is disconnected from power, an alarm will sound from the unit. Re-establish power to the second power supply or remove the second power supply to silence the alarm. The VB-ARCHIVE-SVR can operate in the range 100–240VAC.



Figure 1: VB-ARCHIVE-SVR IP Port Connectors

The VB-ARCHIVE-SVR has a management control port and a secondary network port. The management control port is setup for connection to the VBC and is the only port that is required to be used. The secondary network port can be configured to connect the VB-ARCHIVE to a secondary network if needed.

Establish Web Connection to the VB-ARCHIVE

In order to use the VB-ARCHIVE, it is necessary to establish an Ethernet connection to the device. There are two alternative ways to connect to or set the device’s management IP address: using the pre-set management IP address or connecting a monitor and keyboard to the server.

Using the Pre-Set Management IP Address

The Sencore VB-ARCHIVE-SVR is shipped with the following factory settings for the Control network port:

Control port IP address:	10.0.20.105
Control port subnet mask:	255.255.0.0

In order to connect to the Control port, the PC used for setup should have corresponding network settings. Connect a PC directly to the device’s Control port using an Ethernet cable.

For Windows, the network parameters are set in the **Control Panel — Network and Internet — Network and Sharing Center — Network Connection — Properties — Internet Protocol Version 4 Properties** view, as shown in figure 2. Select the user defined address, and set the PC's IP address to 10.0.20.100 and the subnet mask to 255.255.0.0.

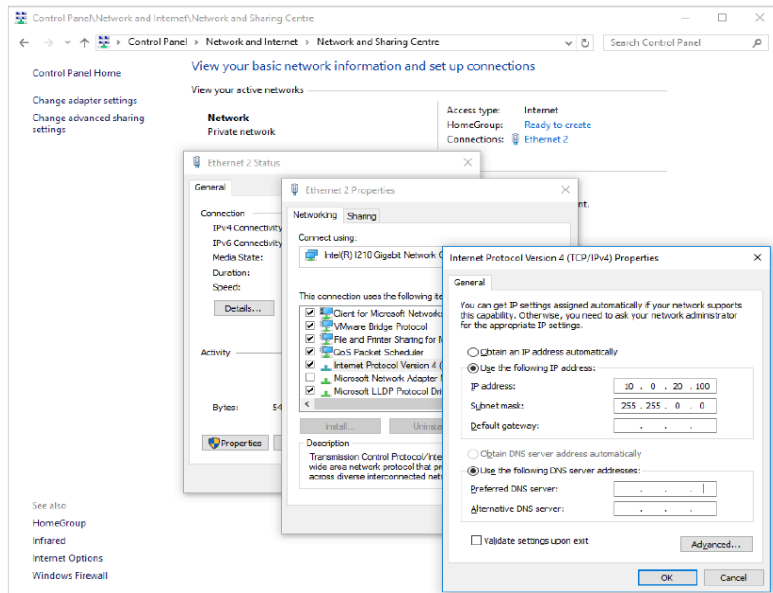


Figure 2: Setting the IP address manually in Windows

When the IP address of the PC has been set in the same subnet as the VB-ARCHIVE-SVR's factory setting, a web browser can be used to access the web user interface at 10.0.20.105 or the network settings can be edited using an SSH connection.

Connecting to the VB-ARCHIVE-SVR Using SSH

In order to manage the server's IP address settings remotely or via the network connection, an SSH session must be established. Any regular SSH client can be used. One popular client, the free application PuTTY, can be downloaded from <http://www.chiark.greenend.org.uk/~sgtatham/putty>.

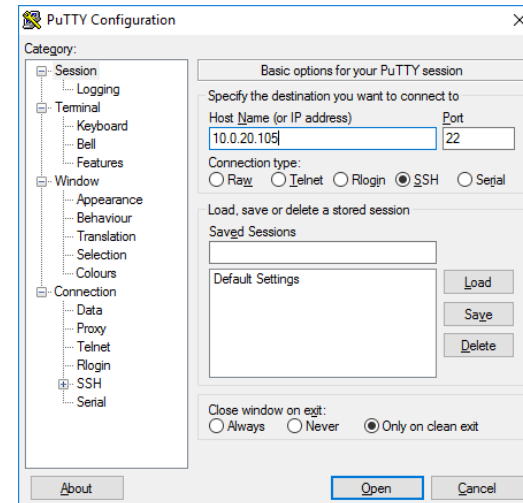


Figure 3: SSH Connection with PuTTY

Use the VB-ARCHIVE-SVR's default Control port IP address 10.0.20.105 (or another address if it has been changed) as the Host Name and click the OPEN button. The default Linux login for Sencore VideoBRIDGE servers is **root** for the user and **mpeg101** for the password. Once you are logged in, use the nmtui tool to edit the network connections.

Connecting Monitor and Keyboard to the VB-ARCHIVE-SVR

It is also possible to configure the network settings of the VB-ARCHIVE-SVR using a monitor and keyboard connected directly to the server. Once the VB-ARCHIVE-SVR boots, login to Linux. The default Linux login for Sencore VideoBRIDGE servers is **root** for the user and **mpeg101** for the password. Once you are logged in, use the nmtui tool to edit the network connections.

Editing Network Connection Settings Using nmtui

The network settings of the VB-ARCHIVE-SVR can be edited using various methods applicable to Linux servers. Sencore recommends the use of the graphical tool nmtui. To load the nmtui tool, type **nmtui** in the command line and press ENTER.

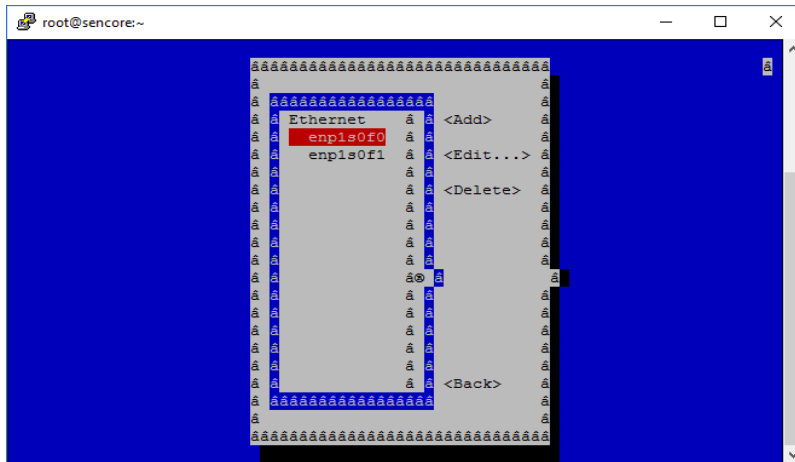


Figure 4: nmtui tool for editing network settings

Once the nmtui tool is loaded, use it to edit a connection. There should be two connections for the VB-ARCHIVE-SVR. The one preset to 10.0.20.105 is the control port and the other is the secondary port. Edit the network settings so that they are appropriate for your network. Then save and quit nmtui and reboot the server using the **reboot** command to apply the new settings.

Once the server reboots, the web user interface can be accessed using the IP address that was set for the control port. All further configuration takes place using a web browser over HTTP.

Connect to the Web User Interface of the VB-ARCHIVE

Launch a web browser application on the management PC. The following web browsers are supported:

- Microsoft Edge
- Microsoft Internet Explorer 11 or higher
- Mozilla Firefox 29 or higher
- Google Chrome
- Apple Safari

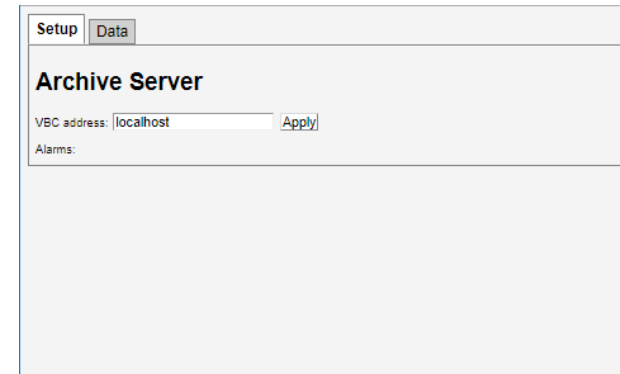


Figure 5: VB-ARCHIVE Web UI

Type the management IP address of the VB-ARCHIVE in the browser URL field and press ENTER. The VB-ARCHIVE web UI will be displayed.

Setup the VB-ARCHIVE and VBC

The next step in setup of the VB-ARCHIVE is to define the IP address of the VBC that will interface with it. Type in the IP address of the VBC and click apply.

Then the VB-ARCHIVE needs to be setup in the equipment list of the VBC. Once a site has been defined, click the *EQUIPMENT* link on the left side of the screen and add new devices by clicking the *Add new device* button. Add a device type of Archive with the IP address of the VB-ARCHIVE.

Define Archive Stream Setup

Once the streams are defined in and being monitored by the VB7880 Advanced Content Extractor, it is possible to setup archiving so that the video thumbnails, captions and audio loudness data is stored for long term retrieval. To do this, go to the **Main – Archive Setup** in the VBC menu structure. Select the streams to be archived, what features are archived and the duration of the archive. Please refer to the full VBC user manual for more details on how to do this.

Verify Correct Operation

Once everything is configured for archiving, the archived data can be retrieved using the *TIMELINE* link in the VBC menu. Select the service to view and select the time period to view using the menus at the top of the window. Please refer to the full VBC user manual for more details on the Timeline feature.

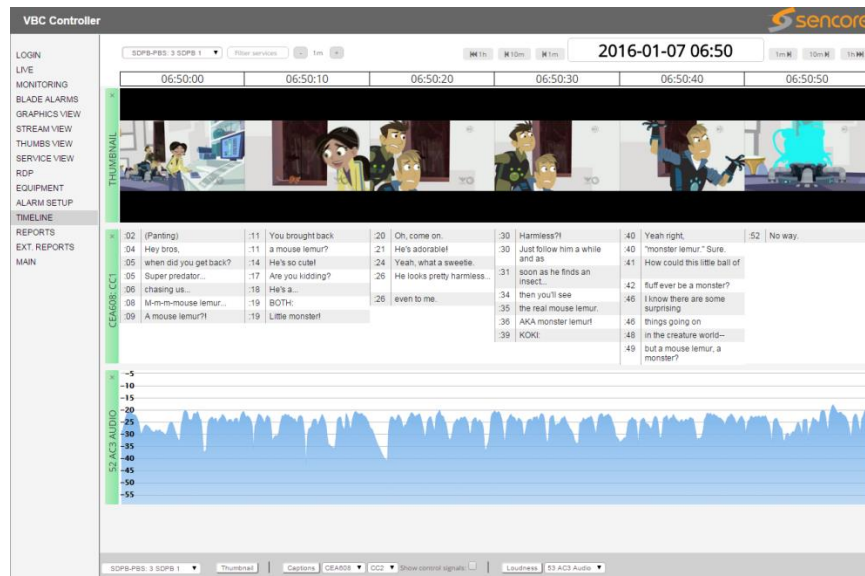


Figure 6: VBC Timeline Archiving Feature

Support

Contact Sencore ProCare for support, if required.

Email: procare@sencore.com

Phone: +1-605-978-4600