

Quick Start Guide VBC Server



About This Quick Start Guide

This guide is for helping new customers get their Sencore VideoBRIDGE Controller (VBC) server setup and running as quickly and easily as possible.

The VBC allows users to collect data from and manage large numbers of VideoBRIDGE probes. It provides data retention, comparative measurements, reports, visualized data and probe management functions.

The Sencore VBC software is available with or without a bundled server. This Quick Start Guide is for users that purchase the server bundled with the VBC software. In this case, the Linux OS and all the software necessary for the VBC operation is already installed on the server chassis. Customers that purchase the VBC software and intend to install it on their own server equipment should refer to the “VB Server Software Install Manual”.

There are two versions of the VBC server offered by Sencore. The VBC 1U-SVR is for installations of less than 20 probes. The VBC-A-SVR is for installations of 20 to 100 probes. This manual covers setup for both VBC servers.

Download the Full User’s Manual

The current versions of the full user’s manuals can be obtained from the Download tab of individual product pages on our website: www.sencore.com or by emailing Sencore ProCare support at procare@sencore.com.

Unpack the Equipment

Check that there are no signs of damage to equipment due to transport. If the equipment appears to be damaged, please contact Sencore ProCare for support.

In addition to the Sencore VBC server hardware itself, the box should include power cables and various rackmount hardware.

Equipment Installation and Power Up

The VBC server is designed for rack installation and should be securely connected to the rack using the included rack rails and screws suitable for the rack type. Note that there should be sufficient room for air to freely flow around the unit, ensuring proper cooling. The VBC server requires front-to-back airflow.

If the VBC server is equipped with dual, redundant power supplies, it should be powered by connecting both power cables to power outlets. If one of the redundant power supplies is disconnected from power, an alarm will sound from the unit. Re-establish power to the second power supply or remove the second power supply to silence the alarm. The VBC server can operate in the range 100–240VAC.



Figure 1: VBC 1U-SVR IP Port Connectors



Figure 2: VBC-A-SVR IP Port Connectors

Both VBC servers have a management control port and a secondary network port. The management control port is setup as the primary web UI port and is the only port that is required to be used. The secondary network port can be configured to connect the VBC to a second network and/or the internet.

Establish Web Connection to the VBC

In order to access the VBCs web user interface, it is necessary to establish an Ethernet connection to the device. There are two alternative ways to connect to or set the device’s management IP address: using the pre-set management IP address or connecting a monitor and keyboard to the server.

Using the Pre-Set Management IP Address

The Sencore VBC server is shipped with the following factory settings for the Control network port:

Control port IP address: **10.0.20.105**
Control port subnet mask: **255.255.0.0**

In order to connect to the Control port, the PC used for setup should have corresponding network settings. Connect a PC directly to the device's Control port using an Ethernet cable.

For Windows, the network parameters are set in the **Control Panel — Network and Internet — Network and Sharing Center — Network Connection — Properties — Internet Protocol Version 4 Properties** view, as shown in figure 3. Select the user defined address, and set the PC's IP address to 10.0.20.100 and the subnet mask to 255.255.0.0.

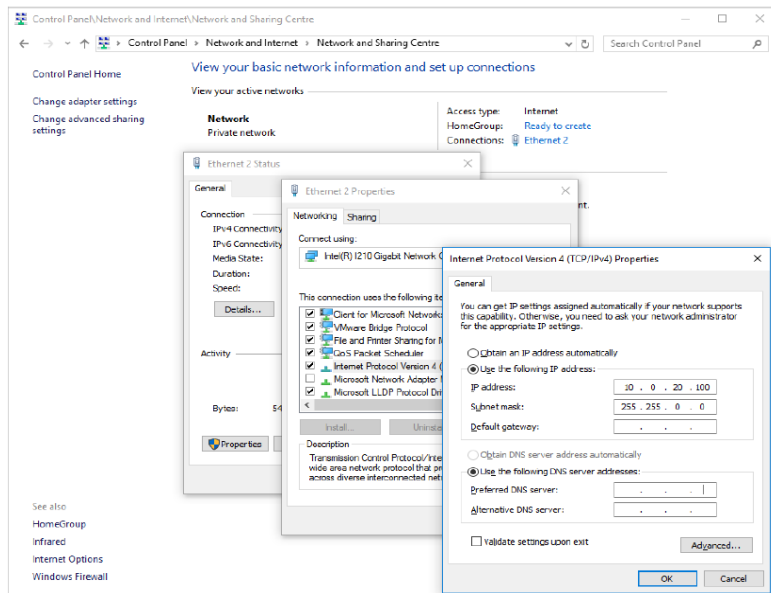


Figure 3: Setting the IP address manually in Windows

When the IP address of the PC has been set in the same subnet as the VBC server's factory setting, a web browser can be used to access the web user interface at 10.0.20.105 or the network settings can be edited using an SSH connection.

Connecting to the VBC Server Using SSH

In order to manage the server's IP address settings remotely or via the network connection, an SSH session must be established. Any regular SSH client can be used. One popular client, the free application PuTTY, can be downloaded from <http://www.chiark.greenend.org.uk/~sgtatham/putty>.

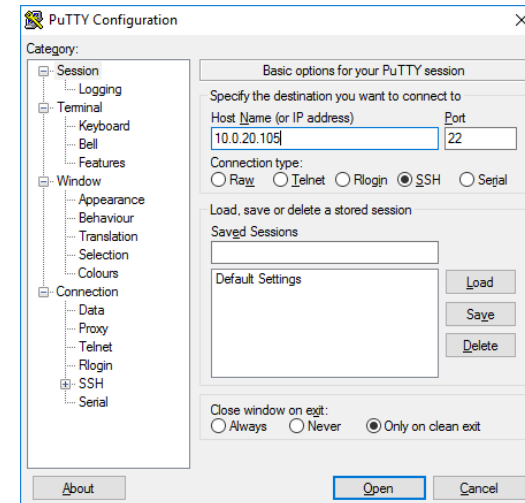


Figure 4: SSH Connection with PuTTY

Use the VBC server's default Control port IP address 10.0.20.105 (or another address if it has been changed) as the Host Name and click the OPEN button. The default Linux login for Sencore VideoBRIDGE servers is **root** for the user and **mpeg101** for the password. Once you are logged in, use the nmtui tool to edit the network connections.

Connecting Monitor and Keyboard to the VBC Server

It is also possible to configure the network settings of the VBC server using a monitor and keyboard connected directly to the server. Once the VBC server boots, login to Linux. The default Linux login for Sencore VideoBRIDGE servers is **root** for the user and **mpeg101** for the password. Once you are logged in, use the nmtui tool to edit the network connections.

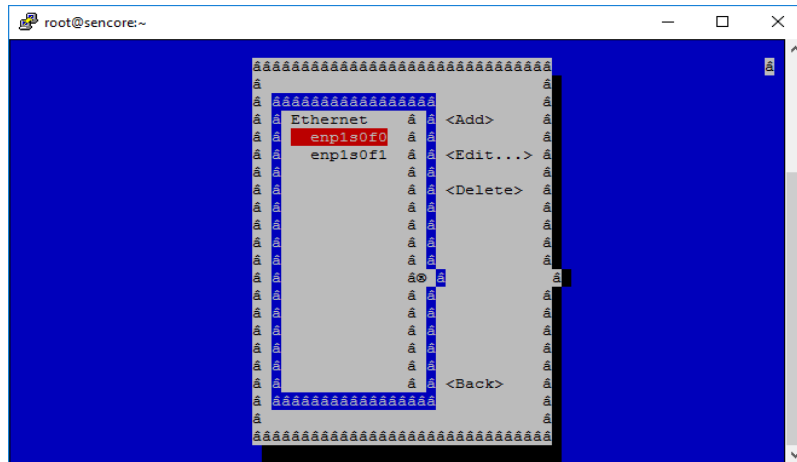


Figure 5: nmtui tool for editing network settings

Editing Network Connection Settings Using nmtui

The network settings of the VBC server can be edited using various methods applicable to Linux servers. Sencore recommends the use of the graphical tool nmtui. To load the nmtui tool, type **nmtui** in the command line and press ENTER.

Once the nmtui tool is loaded, use it to edit a connection. There should be two connections for the VBC server. The one preset to 10.0.20.105 is the control port and the other is the secondary port. Edit the network settings so that they are appropriate for your network. Then save and quit nmtui and reboot the server using the **reboot** command to apply the new settings.

Once the server reboots, the web user interface can be accessed using the IP address that was set for the control port. All further configuration takes place using a web browser over HTTP.

Connect to the Web User Interface of the VBC

Launch a web browser application on the management PC. The following web browsers are supported:

- Microsoft Edge
- Microsoft Internet Explorer 11 or higher
- Mozilla Firefox 29 or higher
- Google Chrome
- Apple Safari

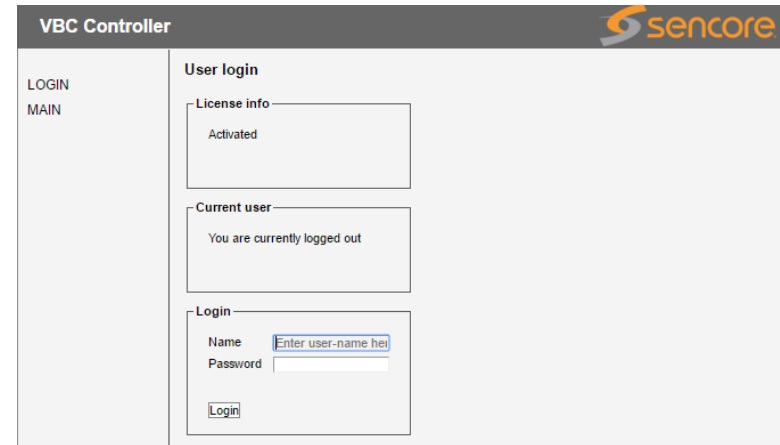


Figure 6: VBC login

Type the management IP address of the VBC in the browser URL field and press ENTER. The VBC login screen will be displayed. The default user is **admin** and the default password is **elvis**.

Define Equipment in the Equipment View

The next step in setup of the VBC is to define the other VideoBRIDGE equipment that will be monitored and controlled by the VBC. The first task is to define at least one site for the equipment to be added to. Multiple sites can be defined, if needed, to segregate results and equipment access. Click the *MAIN* link on the left side of the VBC screen and then click the *SITES AND USERS* link under that. Under the *Sites* tab, click *Add new* to define at least one site.

Once a site has been defined, click the *EQUIPMENT* link on the left side of the screen and add new devices by clicking the *Add new device* button. For each device added, select one of the sites that was define in the previous step.

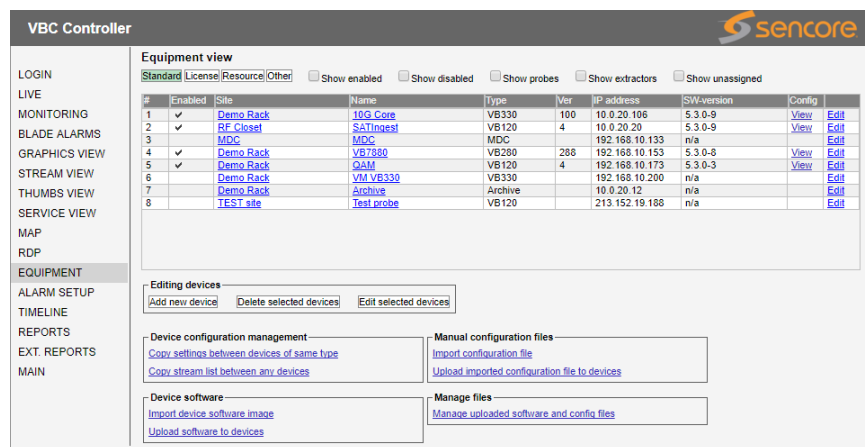
Once devices are added, the stream information and alarms will automatically be gathered by the VBC. Streams that have the same name on multiple devices will automatically be correlated together.

Support

Contact Sencore ProCare for support, if required.

Email: procare@sencore.com

Phone: +1-605-978-4600



| # | Enabled | Site | Name | Type | Ver | IP address | SW-version | Config |
|---|---------|-----------|------------|---------|-----|----------------|------------|-----------|
| 1 | ✓ | Demo Rack | IG3 Core | VB330 | 100 | 10.0.20.106 | 5.3.0-9 | View Edit |
| 2 | ✓ | RF Closet | SATIngest | VB120 | 4 | 10.0.20.29 | 5.3.0-9 | View Edit |
| 3 | | | MDC | MDC | | 192.168.10.133 | n/a | Edit |
| 4 | ✓ | Demo Rack | VB780 | VB280 | 288 | 192.168.10.153 | 5.3.0-8 | View Edit |
| 5 | ✓ | Demo Rack | QAM | VB120 | 4 | 192.168.10.173 | 5.3.0-3 | View Edit |
| 6 | | Demo Rack | VMI VB330 | VB330 | | 192.168.10.200 | n/a | Edit |
| 7 | | Demo Rack | Archive | Archive | | 10.0.20.12 | n/a | Edit |
| 8 | | TEST site | Test probe | VB120 | | 213.152.19.188 | n/a | Edit |

Figure 7: VBC Equipment View

Verify Correct Operation

Once the equipment is configured, verify that the VB probes are accessible under the *MONITORING* link. Also verify that stream information from the probes is available in the *STREAM VIEW* link.

Additional items may need to be configured for correct operation in your network. Please refer to the full user manual for additional, detailed information about how to do this.