

Quick Start Guide VB7810



About This Quick Start Guide

This guide is for helping new customers get their Sencore VB7810 setup and running as quickly and easily as possible.

The VB7810 allows users to monitor up to 10 IP streams and archive the video thumbnails, closed captions and audio loudness data for long term retrieval.

The Sencore VB7810 is a special, bundled version of multiple other VideoBRIDGE products including the VBC, VB7880 and VB-ARCHIVE. The Linux OS and all the software necessary for the VB7810 operation is already installed on the server chassis.

Download the Full User's Manual

The current versions of the full user's manuals can be obtained from the Download tab of individual product pages on our website: www.sencore.com or by emailing Sencore ProCare support at procare@sencore.com. For the VB7810, the VBC and VB7880 full user's manuals should be referenced.

Unpack the Equipment

Check that there are no signs of damage to equipment due to transport. If the equipment appears to be damaged, please contact Sencore ProCare for support.

In addition to the Sencore V7810 server hardware itself, the box should include two power cables and various rackmount hardware.

Equipment Installation and Power Up

The VB7810 is designed for rack installation and should be securely connected to the rack using the included rack rails and screws suitable for the rack type. Note that there should be sufficient room for air to freely flow around the unit, ensuring proper cooling. The VB7810 requires front-to-back airflow.

When the equipment is installed, it should be powered by connecting both power cables to power outlets. If one of the redundant power supplies is disconnected from power, an alarm will sound from the unit. Re-establish power to the second power supply or remove the second power supply to silence the alarm. The VB7810 can operate in the range 100–240VAC.

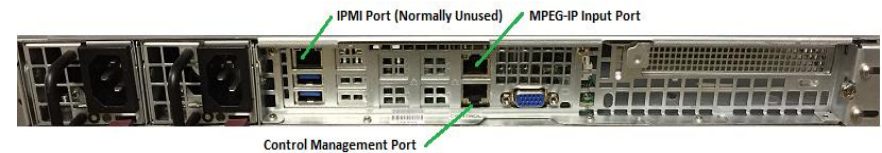


Figure 1: IP Port Connectors

Establish Web Connection to the VB7810

In order to access the VB7810s web user interface, it is necessary to establish an Ethernet connection to the device. There are two alternative ways to connect to or set the device's management IP address: using the pre-set management IP address or connecting a monitor and keyboard to the server.

Using the Pre-Set Management IP Address

The Sencore VB7810 is shipped with the following factory settings for the Control network port:

Control port IP address:	10.0.20.105
Control port subnet mask:	255.255.0.0

In order to connect to the Control port, the PC used for setup should have corresponding network settings. Connect a PC directly to the device's Control port using an Ethernet cable.

For Windows, the network parameters are set in the **Control Panel — Network and Internet — Network and Sharing Center — Network Connection — Properties — Internet Protocol Version 4 Properties** view, as shown in figure 2. Select the user defined address, and set the PC's IP address to 10.0.20.100 and the subnet mask to 255.255.0.0.

When the IP address of the PC has been set in the same subnet as the VB7810's factory setting, a web browser can be used to access the web user interface at 10.0.20.105 or the network settings can be edited using an SSH connection.

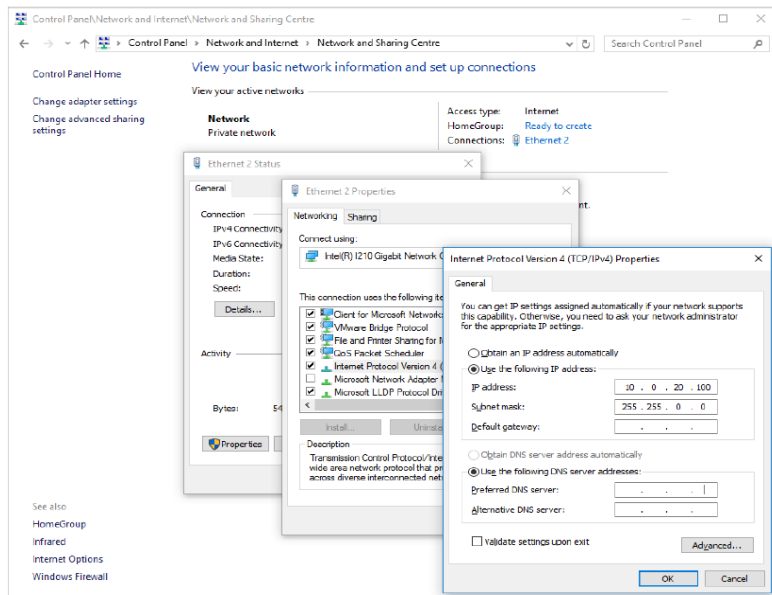


Figure 2: Setting the IP address manually in Windows

Connecting to the VB7810 Using SSH

In order to manage the server's IP address settings remotely or via the network connection, an SSH session must be established. Any regular SSH client can be used. One popular client, the free application PuTTY, can be downloaded from <http://www.chiark.greenend.org.uk/~sgtatham/putty>.

Use the VB7810 default Control port IP address 10.0.20.105 (or another address if it has been changed) as the Host Name and click the OPEN button. The default Linux login for Sencore VideoBRIDGE servers is **root** for the user and **mpeg101** for the password. Once you are logged in, use the nmtui tool to edit the network connections.

Connecting Monitor and Keyboard to the VB7810

It is also possible to configure the network settings of the VB7810 using a monitor and keyboard connected directly to the server. Once the VB7810 server

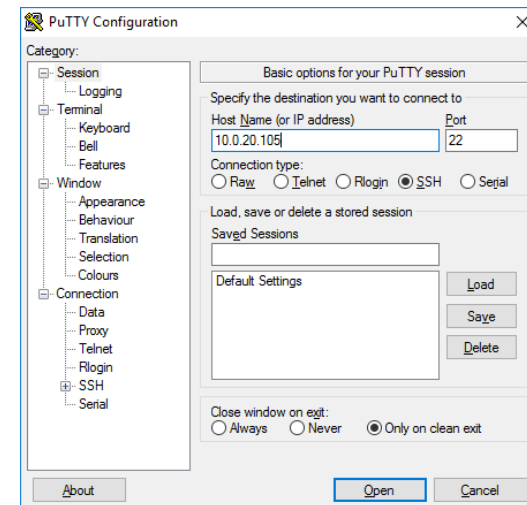


Figure 3: SSH Connection with PuTTY

boots, login to Linux. The default Linux login for Sencore VideoBRIDGE servers is **root** for the user and **mpeg101** for the password. Once you are logged in, use the nmtui tool to edit the network connections.

Editing Network Connection Settings Using nmtui

The network settings of the VB7810 can be edited using various methods applicable to Linux servers. Sencore recommends the use of the graphical tool nmtui. To load the nmtui tool, type **nmtui** in the command line and press ENTER.

Once the nmtui tool is loaded, use it to edit a connection. There should be two connections for the VB7810. The one preset to 10.0.20.105 is the control port and the other is typically for the MPEG over IP input. It is also possible to receive MPEG over IP streams using the Control port. Edit the network settings so that they are appropriate for your network. Then save and quit nmtui and reboot the server using the **reboot** command to apply the new settings.

Once the server reboots, the web user interface can be accessed using the IP address that was set for the control port. All further configuration takes place using a web browser over HTTP.

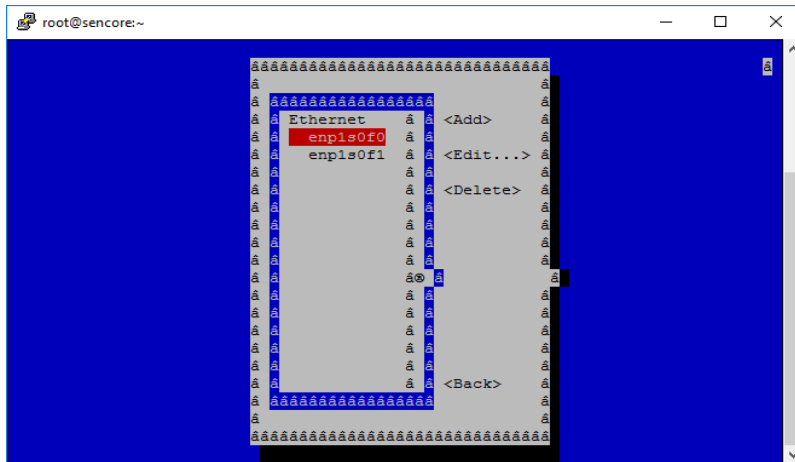


Figure 4: nmtui tool for editing network settings

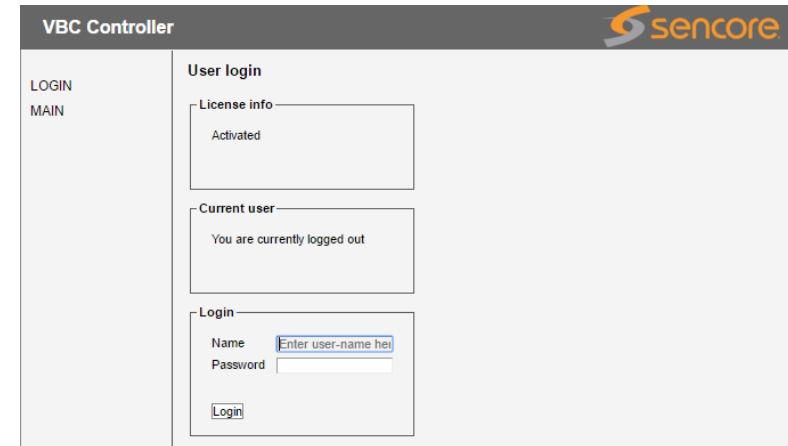


Figure 5: VBC login

Connect to the Web User Interface of the VB7810

Launch a web browser application on the management PC. The following web browsers are supported:

- Microsoft Edge
- Microsoft Internet Explorer 11 or higher
- Mozilla Firefox 29 or higher
- Google Chrome
- Apple Safari

Type the management IP address of the VB7810 in the browser URL field and press ENTER. The VBC login screen will be displayed. The default user is **admin** and the default password is **elvis**.

Define Input Streams in the Extractor

Input streams should be defined in the extractor so that they can be monitored. The streams are defined in the **Multicasts – Streams** tab in the Extractor web UI.

In order to have the Extractor monitor the captions and audio loudness of the defined input streams, New thresholds with caption and audio analysis need to be created and applied to the defined input streams. Please refer to the full VB7880 user manual for more details on how to do this.

Define Archive Stream Setup

Once the streams are defined in and being monitored by the Extractor, it is possible to setup archiving so that the video thumbnails, captions and audio loudness data is stored for long term retrieval. To do this, go to the **Main – Archive Setup** in the VBC menu structure. Select the streams to be archived, what features are archived and the duration of the archive. Please refer to the full VBC user manual for more details on how to do this.

Verify Correct Operation

Once everything is configured for archiving, the archived data can be retrieved using the Timeline link in the VBC menu. Select the service to view and select the time period to view using the menus at the top of the window. Please refer to the full VBC user manual for more details on the Timeline feature.

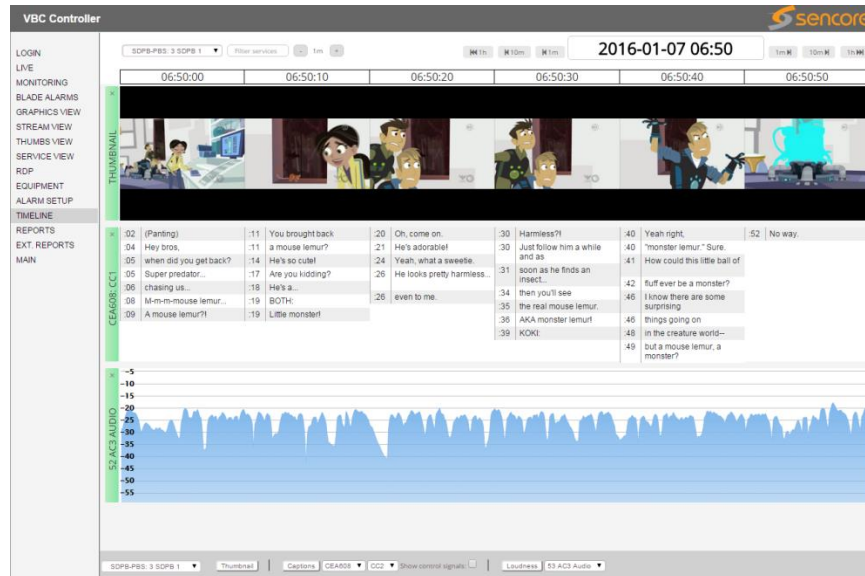


Figure 6: VBC Timeline Archiving Feature

Support

Contact Sencore ProCare for support, if required.

Email: procare@sencore.com

Phone: +1-605-978-4600