

Quick Start Guide VB7880 Server



About This Quick Start Guide

This guide is for helping new customers get their Sencore VB7880 server setup and running as quickly and easily as possible.

The VB7880 is an advanced content extractor and allows users to monitor streams for various video, audio and caption issues..

The Sencore VB7880 software is available with or without a bundled server. This Quick Start Guide is for users that purchase the server bundled with the VB7880 software. In this case, the Linux OS and all the software necessary for the VB7880 operation is already installed on the server chassis. Customers that purchase the VB7880 software and intend to install it on their own server equipment should refer to the “VB Server Software Install Manual”.

Download the Full User’s Manual

The current versions of the full user’s manuals can be obtained from the Download tab of individual product pages on our website: www.sencore.com or by emailing Sencore ProCare support at procare@sencore.com.

Unpack the Equipment

Check that there are no signs of damage to equipment due to transport. If the equipment appears to be damaged, please contact Sencore ProCare for support.

In addition to the Sencore VB7880 server hardware itself, the box should include two power cables and various rackmount hardware.

Equipment Installation and Power Up

The VB7880 server is designed for rack installation and should be securely connected to the rack using the included rack rails and screws suitable for the rack type. Note that there should be sufficient room for air to freely flow around the unit, ensuring proper cooling. The VB7880 server requires front-to-back airflow.

When the equipment is installed, it should be powered by connecting both power cables to power outlets. If one of the redundant power supplies is disconnected from power, an alarm will sound from the unit. Re-establish power to the second

power supply or remove the second power supply to silence the alarm. The VB7880 server can operate in the range 100–240VAC.

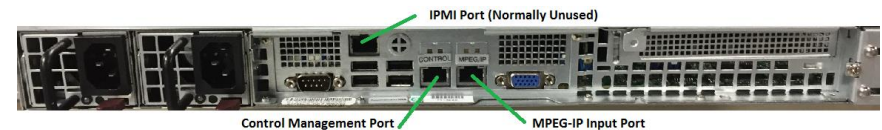


Figure 1: VB7880 Server IP Port Connectors

Establish Web Connection to the VB7880

In order to access the VB7880s web user interface, it is necessary to establish an Ethernet connection to the device. There are two alternative ways to connect to or set the device’s management IP address: using the pre-set management IP address or connecting a monitor and keyboard to the server.

Using the Pre-Set Management IP Address

The Sencore VB7880 server is shipped with the following factory settings for the Control network port:

Control port IP address:	10.0.20.105
Control port subnet mask:	255.255.0.0

In order to connect to the Control port, the PC used for setup should have corresponding network settings. Connect a PC directly to the device’s Control port using an Ethernet cable.

For Windows, the network parameters are set in the **Control Panel — Network and Internet — Network and Sharing Center — Network Connection — Properties — Internet Protocol Version 4 Properties** view, as shown in figure 2. Select the user defined address, and set the PC’s IP address to 10.0.20.100 and the subnet mask to 255.255.0.0.

When the IP address of the PC has been set in the same subnet as the VB7880’s factory setting, a web browser can be used to access the web user interface at 10.0.20.105 or the network settings can be edited using an SSH connection.

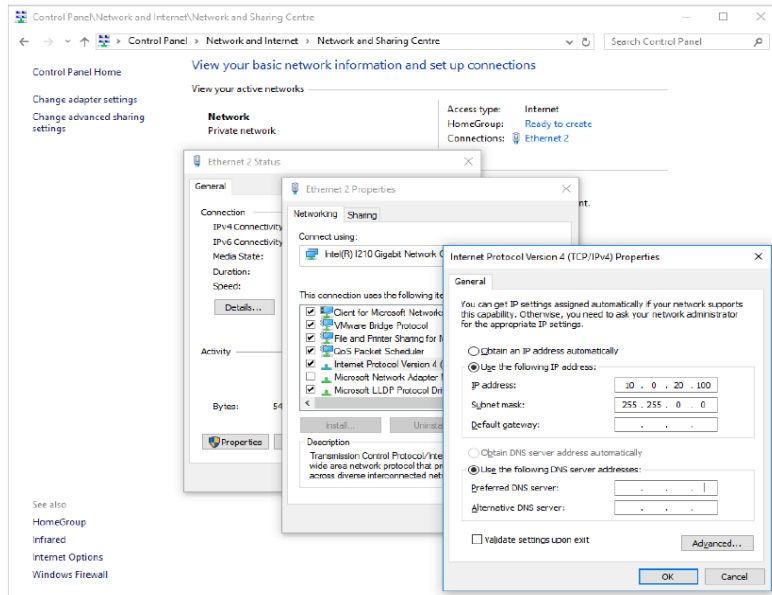


Figure 2: Setting the IP address manually in Windows

Connecting to the VB7880 Using SSH

In order to manage the server's IP address settings remotely or via the network connection, an SSH session must be established. Any regular SSH client can be used. One popular client, the free application PuTTY, can be downloaded from <http://www.chiark.greenend.org.uk/~sgtatham/putty>.

Use the VB7880 default Control port IP address 10.0.20.105 (or another address if it has been changed) as the Host Name and click the OPEN button. The default Linux login for Sencore VideoBRIDGE servers is **root** for the user and **mpeg101** for the password. Once you are logged in, use the nmtui tool to edit the network connections.

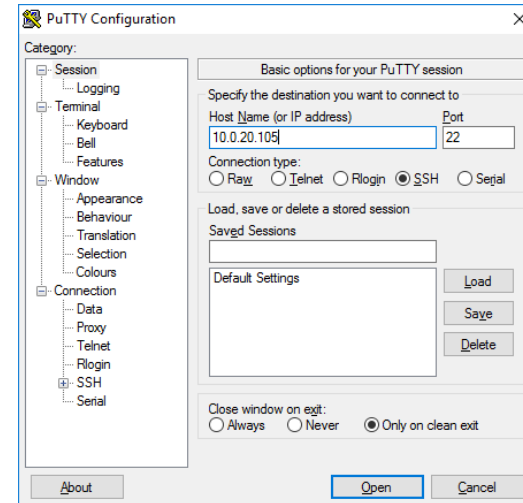


Figure 3: SSH Connection with PuTTY

Connecting Monitor and Keyboard to the VB7880

It is also possible to configure the network settings of the VB7880 server using a monitor and keyboard connected directly to the server. Once the VB7880 server boots, login to Linux. The default Linux login for Sencore VideoBRIDGE servers is **root** for the user and **mpeg101** for the password. Once you are logged in, use the nmtui tool to edit the network connections.

Editing Network Connection Settings Using nmtui

The network settings of the VB7880 server can be edited using various methods applicable to Linux servers. Sencore recommends the use of the graphical tool nmtui. To load the nmtui tool, type **nmtui** in the command line and press ENTER.

Once the nmtui tool is loaded, use it to edit a connection. There should be two connections for the VB7880 server. The one preset to 10.0.20.105 is the control port and the other is typically for the MPEG over IP input. It is also possible to receive MPEG over IP streams using the Control port. Edit the network settings so that they are appropriate for your network. Then save and quit nmtui and reboot the server using the **reboot** command to apply the new settings.

Quick Start Guide VB7880 Server



Once the server reboots, the web user interface can be accessed using the IP address that was set for the control port. All further configuration takes place using a web browser over HTTP.

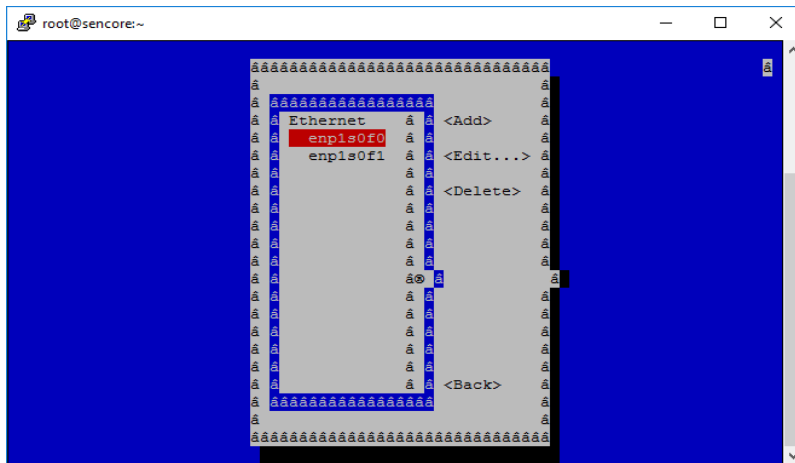


Figure 4: nmtui tool for editing network settings

Connect to the Web User Interface of the VB7880

Launch a web browser application on the management PC. The following web browsers are supported:

- Microsoft Edge
- Microsoft Internet Explorer 11 or higher
- Mozilla Firefox 29 or higher
- Google Chrome
- Apple Safari

Type the management IP address of the VB7880 server in the browser URL field and press ENTER. By default, the VB7880 does not require a user name and password to login.

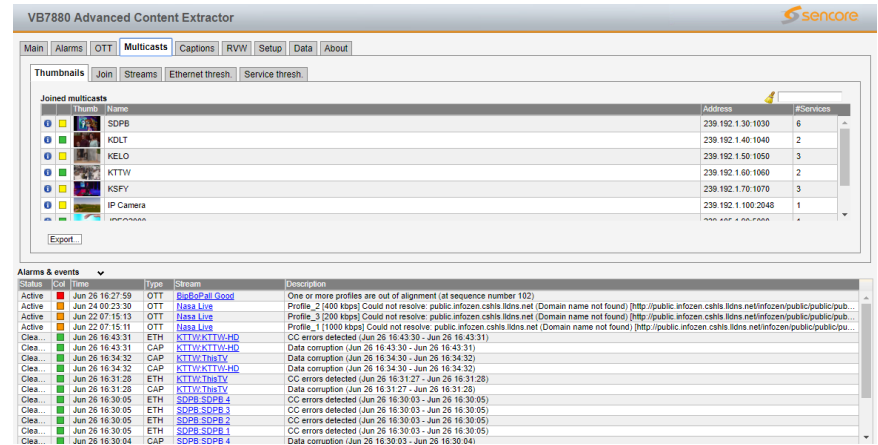


Figure 5: VB7880 Web UI

Define Input Streams in the VB7880

Input streams should be defined in the VB7880 so that they can be monitored. The MPEG-IP streams are defined in the **Multicasts – Streams** tab in the VB7880 web UI. OTT streams are defined in the **OTT – Channels** tab.

In order to have the VB7880 monitor the captions and audio loudness of the defined input streams, New thresholds with caption and audio analysis need to be created and applied to the defined input streams. Please refer to the full VB7880 user manual for more details on how to do this.

Verify Correct Operation

Once the input streams are configured, verify that the VB7880 is able to receive and decode the streams. MPEG-IP streams can be viewed from the **Multicasts** tab and OTT streams from the **OTT** tab.

Additional items may need to be configured for full functionality in your network. Please refer to the full VB7880 user manual for more details on the setup.

Support

Contact Sencore ProCare for support, if required.

Email: procare@sencore.com

Phone: +1-605-978-4600