



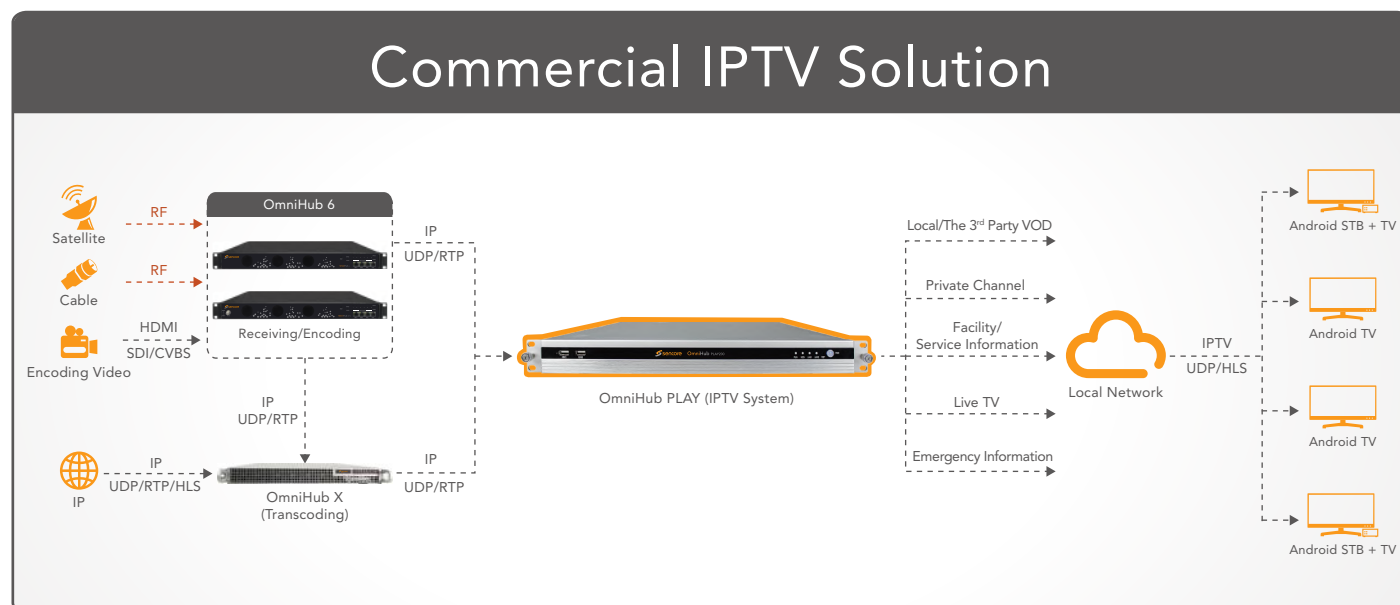
INTRODUCTION

The OmniHub PLAY IPTV system is an intuitive yet powerful solution for centralized management of Android-based set-top boxes. With increasing popularity of IPTV technology, OmniHub PLAY is perfect for hospitality, education, government, or any facility looking to play IP videos across multiple televisions. It can be easily customized to access to live channels, video-on-demand assets, and digital signage using a simplified web-interface. Made possible by PLAY's APK software (Android app), the powerful PLAY200 server supports up to 500 STB over the network. OmniHub PLAY allows the facility to update high-quality images and customize messages from the head-end without the hassle of visiting each STB location. It maximizes return-on-investment (ROI) by incorporating house channels, advertisements, and other relevant information at the television as viewers interact via a hand-held remote.

FEATURES

- Play back live IP video services using industry standards of UDP and RTP, and HLS protocols
- Control the "Channel Lineup" and customize the order of up to 60 live channels
- Centralize management and content permission to control up to 500 STB in the local area network
- Customize logos, branding, welcome pages, and introduction messages to maximize viewer impression and ROI
- Provide native support for uploading 1080p.MP4 video files for VOD/On-Demand style playback
 - House Channels / Marketing Videos / Recorded Powerpoint Presentations
 - Partner Advertisements
 - Pre-recorded Movies and Television programmes
- Support integration of third-party VOD systems
- Provide a user-friendly web-interface to control the PLAY server remotely (no more standing in noisy equipment rooms)
- Remotely administer software updates and user-experience changes on the STB (no need to visit each television/STB location to make changes)
- Modern APK software player to run on the official PLAY STB and most Android-based STB

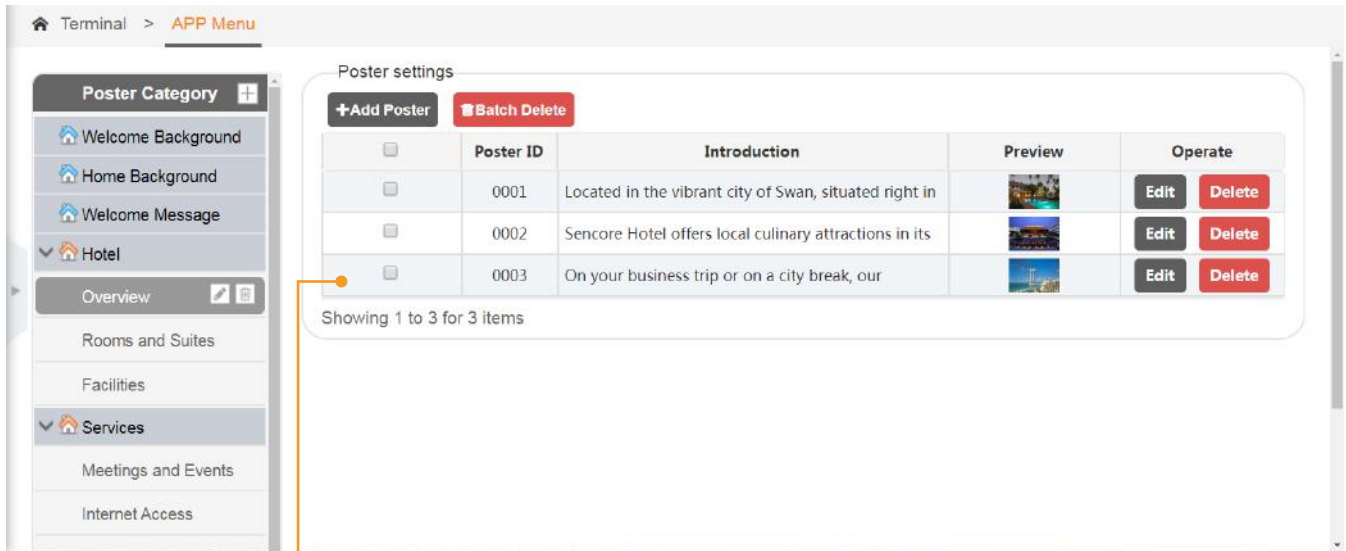
SYSTEM DIAGRAM



SPECIFICATIONS

Inputs	
Interface	RJ45, 100/1000M Auto-Negotiate
Input Protocols	UDP/RTP/RTSP/HLS
IP Addressing	Unicast, Multicast, OTT URL
IGMP Support	Version 1, 2, and 3
IP Encapsulation	1 to 7 TS Packets per IP Packet
Outputs	
Interface	RJ45, 100/1000M Auto-Negotiate
Output Protocols	UDP/RTP/HLS
Systems	
6 x RJ45 10/1000M Auto-Negotiated Ethernet Ports	
Web-based network management & software upgrade	
Physical & Environment	
Chassis Dimension (W x H x D)	OMNIHUB PLAY100: 440mm x 44mm x 285mm (17.32" x 1.73" x 11.22") OMNIHUB PLAY200: 426mm x 43mm x 356mm (16.8" x 1.7" x 14")
Weight	OMNIHUB PLAY100: 3.66 kg (8.07 lb) OMNIHUB PLAY200: 4.99 kg (11 lb)
Power	OMNIHUB PLAY100: 110-220V VAC/50-60Hz Max. 60W
	OMNIHUB PLAY200: AC 100-240V/50-60Hz Max. 200W
Operation Temperature	OMNIHUB PLAY100: -10°C~60°C (-14°F~140°F) OMNIHUB PLAY200: 5°C~35°C (41°F~95°F)
Storage Temperature	OMNIHUB PLAY100: -20°C~70°C (-4°F~158°F) OMNIHUB PLAY200: -40°C~70°C (-40°F~158°F)

USER-FRIENDLY WEB GUI

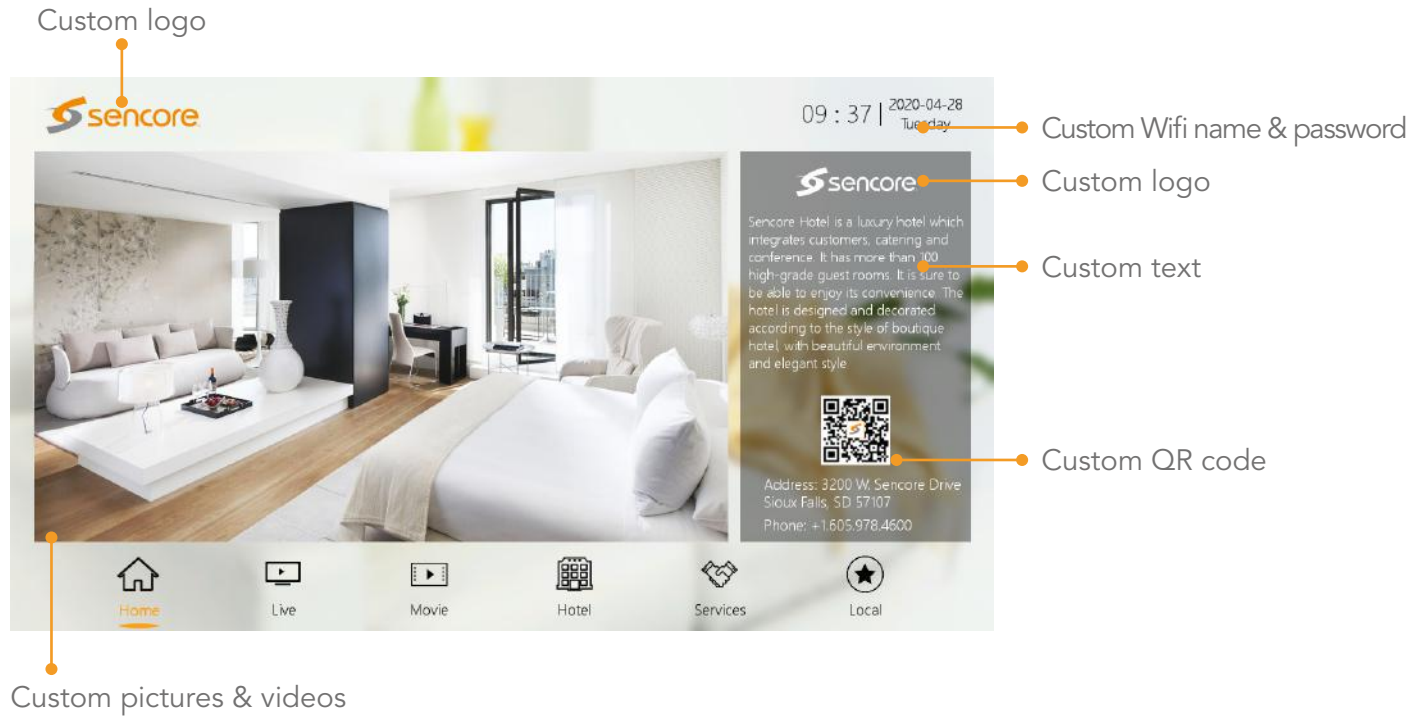


Straightforward and easy-to-use
Custom menu, pages and contents for different uses

WELCOME PAGE



HOME PAGE



LIVE

- PLAY server receives and re-orders up to 60 live unencrypted UDP/RTP services
- Multicast/Unicast "IPTV" Transport Streams, or HLS/RTSP protocol URL's with Transport Stream payload
- PLAY Server is fully compatible with OmniHub-6 and OmniHub-16 chassis for converting off-air antenna signals, QAM-256B Cable TV, or Satellite into IPTV (UDP/Multicast)

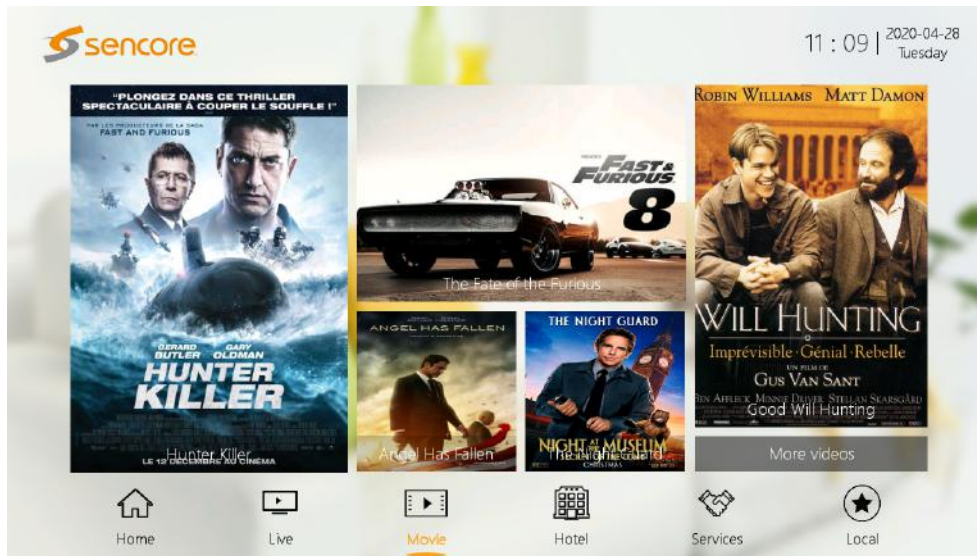


- PLAY Server is fully compatible with Impulse Streaming Kit for broadcasting on-site events over WiFi, On-premise IPTV, or even internet streaming to any RTMP destination (Youtube, Facebook Live, Twitch, Ustream, etc.)
- PLAY Server supports closed caption display when available

LOCAL VOD

Supports local programs creation for VOD

Supports sorting and grouping programs



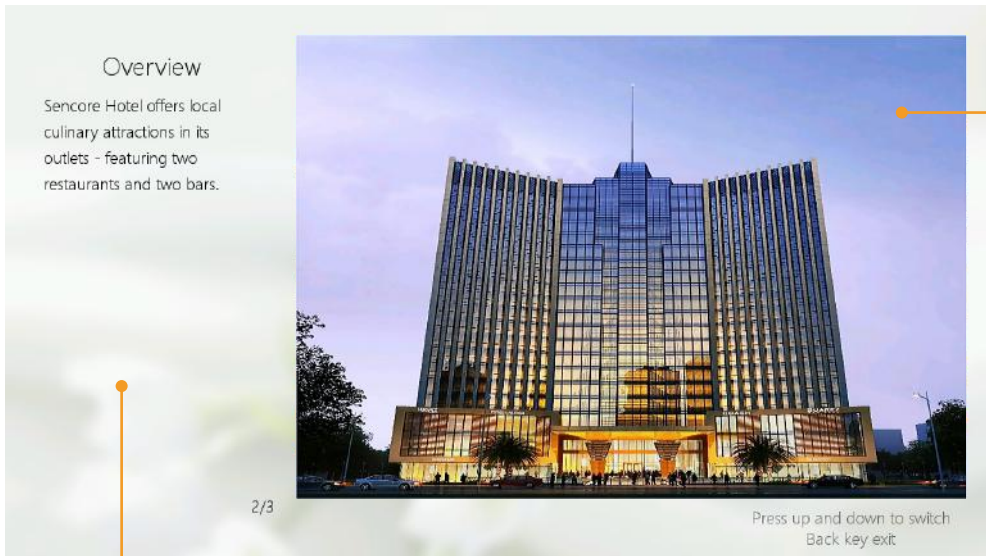
THE 3rd PARTY VOD

supports the 3rd party SVOD such as YouTube, NETFLIX, HBO and more.



CUSTOMIZED VIEWER IMPRESSIONS

Customized high-quality images and editable texts
Allow users to page through slides with the hand-held remote

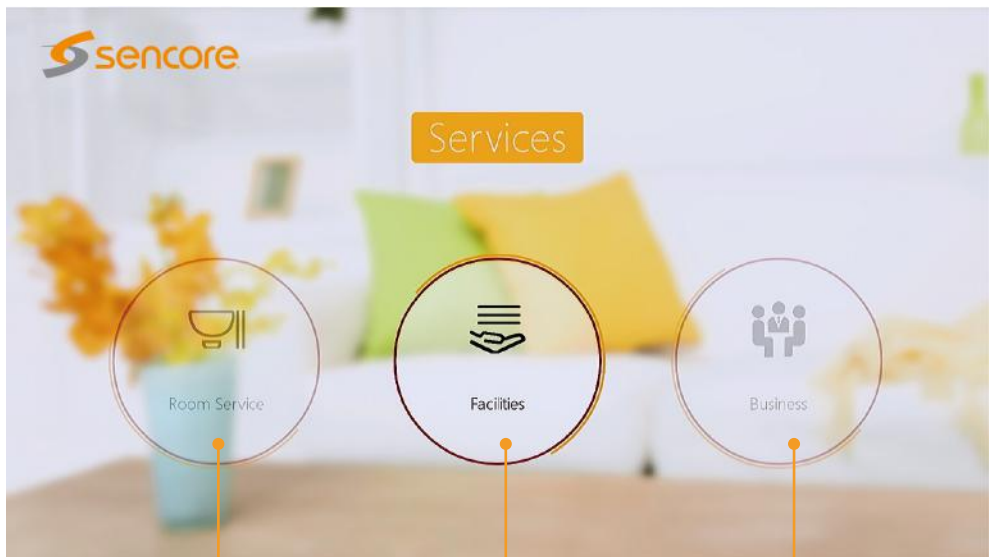


Custom texts

Custom pictures & videos

SERVICES

Quick guide for hotel guests to use hotel services
Promote amenities and additional offerings to drive ROI



Customizable modules for advertisements

ORDER INFORMATION

Part Number	Description
OMNIHUB-PLAY100	Basic packae including hardware and software. Unicast(HLS) mode: support up to 30 live SD/HD channels and 200 devices. Multicast mode: support up to 30 channels and 200 devices
OMNIHUB-PLAY200	Standard package including hardware and software. Support local VOD(additional license required). Unicast(HLS) mode: support up to 60 live SD/HD channels and 500 devices. Multicast mode: support up to 150 channels and 500 devices.
OMNIHUB-PLAY-STB	Android-based set-top box, support H.264/MPEG-2 HD/SD video and MPEG1L2/AAC/AC3 audio decoding. Easy to use with OMNIHUB PLAY IPTV System.