

Quick Start Guide DMG 7000



About This Quick Start Guide

This guide is for helping new customers get their Sencore DMG 7000 setup and running as quickly and easily as possible.

The DMG 7000 internet transport gateway allows users to send and receive protocols intended for transporting video/audio streams over the public internet in a reliable manner. These protocols include Zixi, SRT, HLS and MPEG/IP with forward error correction. Transporting content over the internet offers many advantages including reduce cost of operation, quick deployment and enabling workflows not previously possible via satellite or fiber links.

Download the Full User's Manual

The current versions of the full user's manuals can be obtained from the Download tab of individual product pages on our website: www.sencore.com or by emailing Sencore ProCare support at procare@sencore.com.

Unpack the Equipment

Check that there are no signs of damage to equipment due to transport. If the equipment appears to be damaged, please contact Sencore ProCare for support.

In addition to the Sencore DMG 7000 hardware itself, the box should include power cables or AC adapters and various rackmount hardware.

Equipment Installation and Power Up

The DMG 70020 and DMG 70030 server hardware is designed for rack installation and should be securely connected to the rack using the included rack rails and screws suitable for the rack type. Note that there should be sufficient room for air to freely flow around the unit, ensuring proper cooling. The chassis requires front-to-back airflow.

The DMG 70020 and DMG 70030 server hardware is specified to operate in the range of 100–240VAC, 50-60Hz

DMG 70010 Hardware –

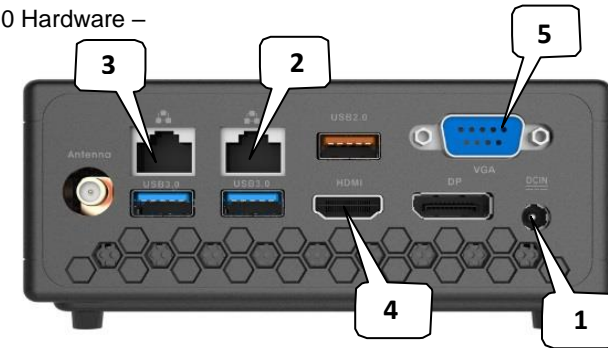


Figure 1: DMG 70010 Rear Port Connectors

1. Power Connector: Provides power connection for powering the system
2. eth0 Port: Network port for management and streaming.
3. eth1 Port: Network port for management and streaming.
4. HDMI Monitor Output
5. VGA Monitor Output

DMG 70020 Hardware –

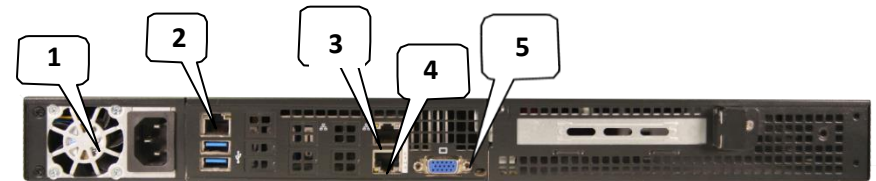


Figure 2: DMG 70020 Rear Port Connectors

1. Power Connector: Provides AC power connection for powering the system
2. IPMI Port: Can be used for remote server management, but not normally used in the DMG 7000 operation
3. eth0 Port: Network port for management and streaming.
4. eth1 Port: Network port for management and streaming.
5. VGA Monitor Output

DMG 70030 Hardware –

Quick Start Guide DMG 7000

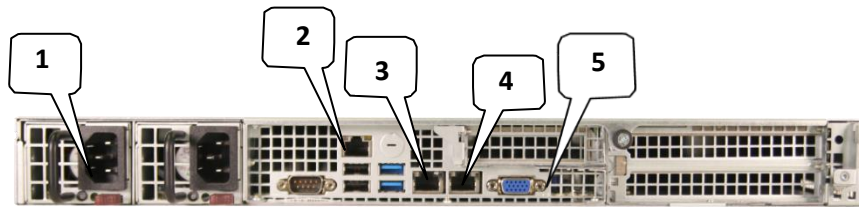


Figure 3: DMG 70030 Rear Port Connectors

1. Dual Power Connectors: Provides AC power connection for powering the system
2. IPMI Port: Can be used for remote server management, but not normally used in the DMG 7000 operation
3. eth0 Port: Network port for management and streaming.
4. eth1 Port: Network port for management and streaming.
5. VGA Monitor Output

Establish a Web Connection to the DMG 7000

To access the DMG 7000 web user interface, it is necessary to establish an Ethernet connection to the device. There are two alternative ways to connect to or set the device's management IP address: using the pre-set management IP address or connecting a monitor and keyboard to the server.

Using the Pre-Set Management IP Address

The Sencore DMG 7000 is shipped with the following factory settings for the network ports:

eth0 Default IP Address:	10.0.20.101
eth0 Default Subnet Mask:	255.255.0.0
eth1 Default IP Address:	DHCP

To connect to the web UI, the PC used for setup should have corresponding network settings. Connect a PC directly to Eth1 using an Ethernet cable.

For Windows, the network parameters are set in the **Control Panel — Network and Internet — Network and Sharing Center — Network Connection — Properties — Internet Protocol Version 4 Properties** view, as shown in figure

2. Select the user defined address and set the PC's IP address to 10.0.20.60 and the subnet mask to 255.255.0.0.

When the IP address of the PC has been set in the same subnet as the DMG 7000 factory setting, a web browser can be used to access the web user interface at 10.0.20.101.

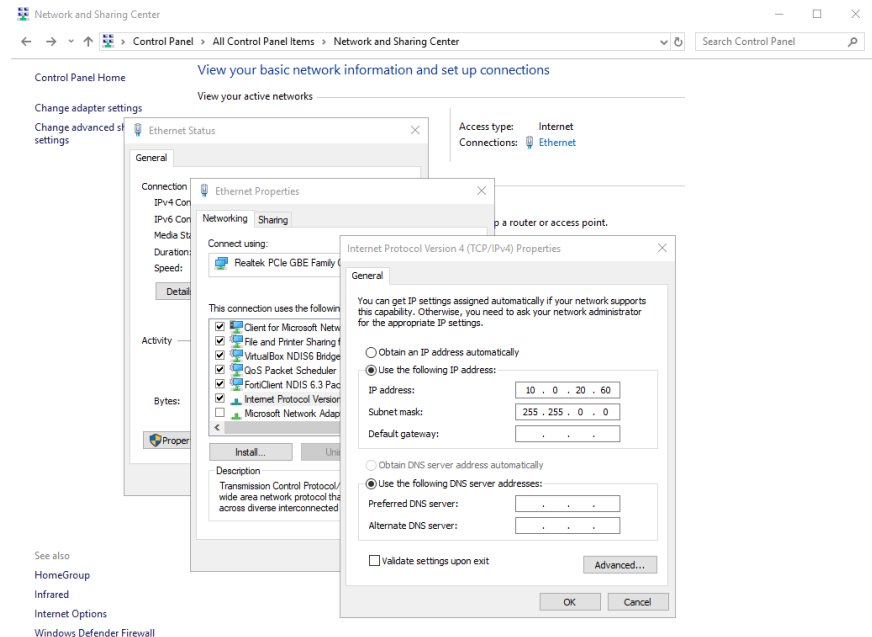


Figure 2: Setting the IP address manually in Windows

Connecting Monitor and Keyboard to the DMG 7000

It is also possible to configure the network settings of the DMG 7000 using a monitor and keyboard connected directly to the server. Once the DMG 7000 server boots, a console screen will be shown which will allow viewing and configuring the IP settings of the system

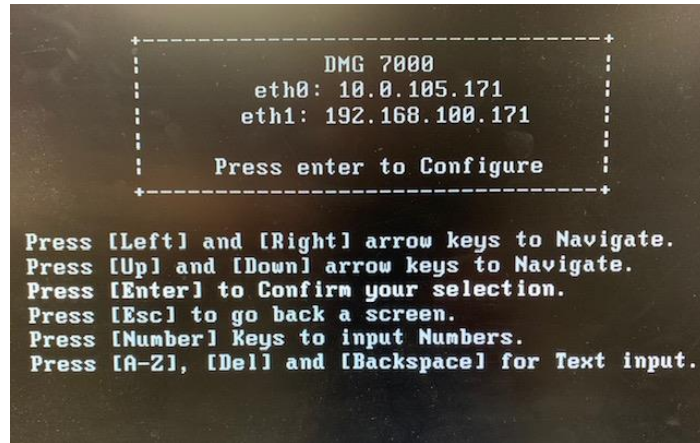


Figure 3: DMG 7000 Console Screen

The eth0 and eth1 IP addresses are shown on the initial main menu. If the IP addresses are not shown or they are to be changed, press the ENTER key on the keyboard to advance to the next menu.

The next screen allows configuration of both global network settings and the configuration of any of the eth ports. Select Configure Networks to change the host name, default gateway or DNS settings. Select eth0 Adapter Status to change the IP mode (static/DHCP), IP address, netmask, or gateway for eth0. Select the other Adapter Status selections to configure the other eth ports. Configure the networks settings to be appropriate for your network and consult the full user manual if more instructions are needed.

Once the network ports are configured, press ESC to return to the main menu. Verify that the correct IP address is displayed for eth0 or eth1. A reboot is not necessary for the settings to be applied

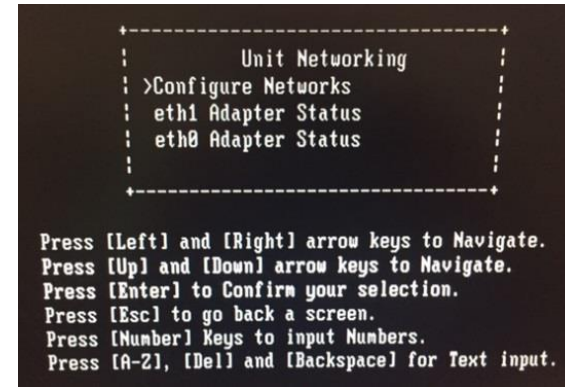


Figure 4: DMG 7000 Console Configuration Screen

Connect to the Web User Interface of the DMG 7000

Launch a web browser application on the management PC. The following web browsers are supported:

- Microsoft Edge
- Microsoft Internet Explorer 9 or higher
- Mozilla Firefox
- Google Chrome

Type the management IP address of the DMG 7000 in the browser URL field and press ENTER. The DMG 7000 login screen will be displayed. The default user is **admin** and the default password is **mpeg101**. In software older than 1.9.0 the password will be blank. Click Login to continue.

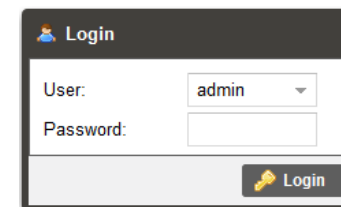


Figure 5: DMG 7000 Web UI Login Screen

Quick Start Guide DMG 7000



Define Gateways for Streaming

Once logged in, the main screen of the DMG 7000 is displayed. Click on the Gateway tab and then 'Add Gateway' to begin configuring the DMG 7000 for operation.

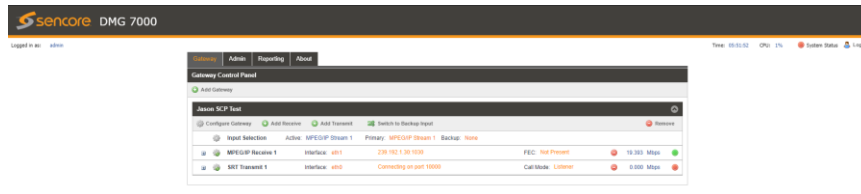


Figure 6: DMG 7000 Main Screen

Support

Reference the full User Manual for more information about operation or troubleshooting the unit.

Contact Sencore ProCare for support, if required.

Email: procare@sencore.com

Phone: +1-605-978-4600