

Quick Start Guide MRD 7000



About This Quick Start Guide

This guide is for helping new customers get their Sencore MRD 7000 setup and running as quickly and easily as possible.

The MRD 7000 multichannel multiformat receiver decoder is capable of decoding HEVC, H.264 and MPEG2 transport streams up to UHD resolutions. Input options include MPEG/IP, ASI, satellite, Zixi and SRT. Output options include SDI, HDMI, and ST 2110. No matter the hardware and software options your MRD 7000 has, accessing the user interface is always the same.

Download the Full User's Manual

The current versions of the full user's manuals can be obtained from the Download tab of individual product pages on our website: www.sencore.com or by emailing Sencore ProCare support at procare@sencore.com.

Unpack the Equipment

Check that there are no signs of damage to equipment due to transport. If the equipment appears to be damaged, please contact Sencore ProCare for support.

In addition to the Sencore MRD 7000 hardware itself, the box should include power cables or AC adapters and various rackmount hardware.

Equipment Installation and Power Up

The MRD 7000 server hardware is designed for rack installation and should be securely connected to the rack using the included rack rails and screws suitable for the rack type. Note that there should be sufficient room for air to freely flow around the unit, ensuring proper cooling. The chassis requires front-to-back airflow.

The MRD 7000 server hardware is specified to operate in the range of 100–240VAC, 50-60Hz

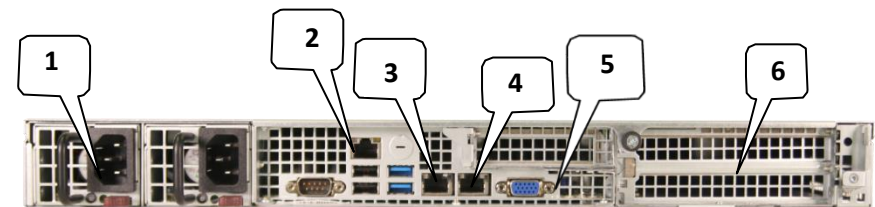


Figure 1: MRD 7000 Chassis Rear Connectors

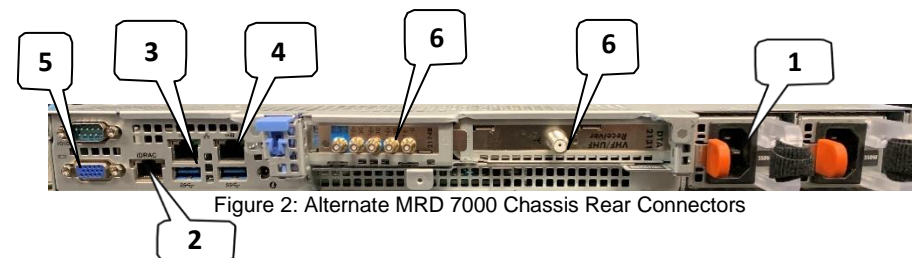


Figure 2: Alternate MRD 7000 Chassis Rear Connectors

1. Dual Power Connectors: Provides AC power connection for powering the system
2. IPMI Port: Can be used for remote server management, but not normally used in the MRD 7000 operation
3. eth0 Port: Network port for management and IP input.
4. eth1 Port: Network port for management and IP input.
5. VGA Monitor Output
6. I/O Modules

NOTE: I/O modules can vary depending on options. For details on connecting ASI, RF, SDI, HDMI, or ST 2110 see the full user's manual.

Quick Start Guide MRD 7000



Establish a Web Connection to the MRD 7000

To access the MRD 7000 web user interface, it is necessary to establish an Ethernet connection to the device. There are two alternative ways to connect to or set the device's management IP address: using the pre-set management IP address or connecting a monitor and keyboard to the server.

Using the Pre-Set Management IP Address

The Sencore MRD 7000 is shipped with the following factory settings for the network ports:

eth0 Default IP Address:	10.0.20.101
eth0 Default Subnet Mask:	255.255.0.0
eth1 Default IP Address:	DHCP

To connect to the web UI, the PC used for setup should have corresponding network settings. Connect a PC directly to eth0 using an Ethernet cable.

For Windows, the network parameters are set in the **Control Panel — Network and Internet — Network and Sharing Center — Network Connection — Properties — Internet Protocol Version 4 Properties** view, as shown in figure 3. Select the user defined address and set the PC's IP address to 10.0.20.60 and the subnet mask to 255.255.0.0.

When the IP address of the PC has been set in the same subnet as the MRD 7000 factory setting, a web browser can be used to access the web user interface at 10.0.20.101.

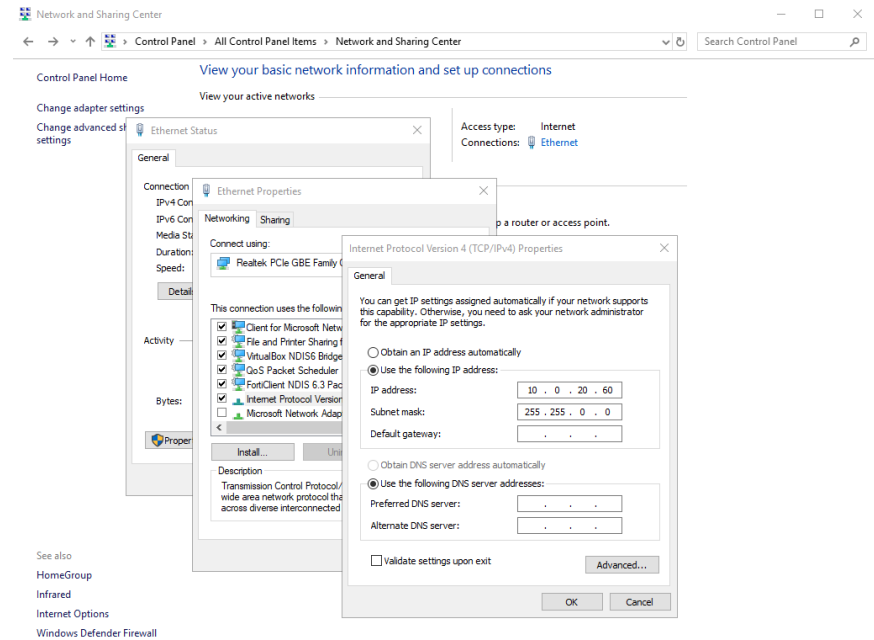


Figure 3: Setting the IP address manually in Windows

Connecting Monitor and Keyboard to the MRD 7000

It is also possible to configure the network settings of the MRD 7000 using a monitor and keyboard connected directly to the server. Once the MRD 7000 server boots, a console screen will be shown which will allow viewing and configuring the IP settings of the system

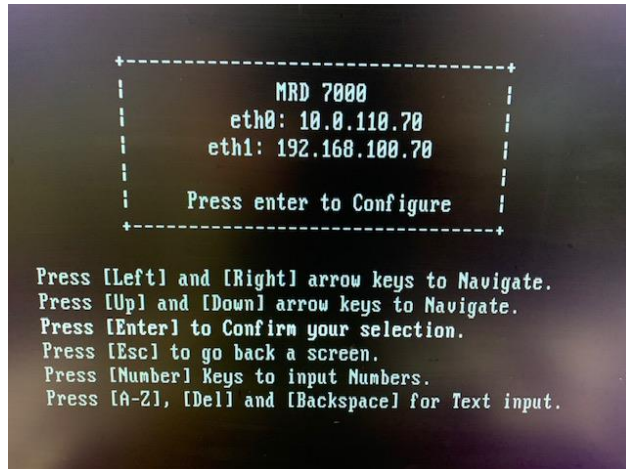


Figure 4: MRD 7000 Console Screen

The eth0 and eth1 IP addresses are shown on the initial main menu. If the IP addresses are not shown or they are to be changed, press the ENTER key on the keyboard to advance to the next menu.

The next screen allows configuration of both global network settings and the configuration of any of the eth ports. Select Configure Networks to change the host name, default gateway or DNS settings. Select eth0 Adapter Status to change the IP mode (static/DHCP), IP address, netmask, or gateway for eth0. Select the other Adapter Status selections to configure the other eth ports. Configure the networks settings to be appropriate for your network and consult the full user manual if more instructions are needed.

Once the network ports are configured, press ESC to return to the main menu. Verify that the correct IP address is displayed for eth0 or eth1. A reboot is not necessary for the settings to be applied

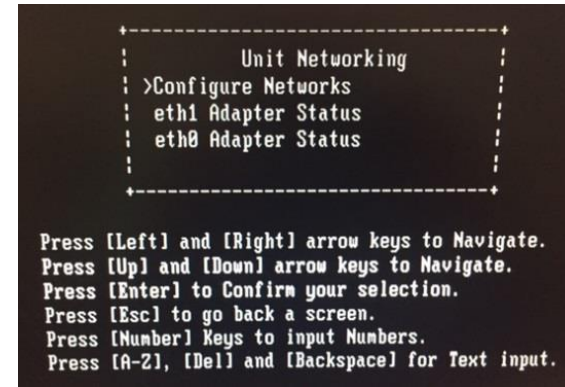


Figure 5: MRD 7000 Console Configuration Screen

Connect to the Web User Interface of the MRD 7000

Launch a web browser application on the management PC. The following web browsers are supported:

- Microsoft Edge
- Microsoft Internet Explorer 9 or higher
- Mozilla Firefox
- Google Chrome

Type the management IP address of the MRD 7000 in the browser URL field and press ENTER. The MRD 7000 login screen will be displayed. The default user is **admin** and the default password is **mpeg101**. Click Login to continue.

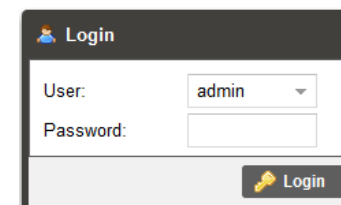


Figure 6: MRD 7000 Web UI Login Screen

Quick Start Guide MRD 7000



Define Decoder Configuration

Once logged in, the main screen of the MRD 7000 is displayed. Click on the Decoder tab to begin configuring the MRD 7000 for operation.

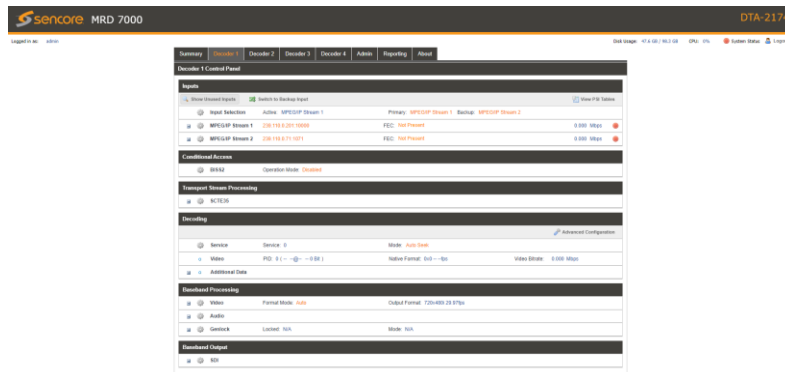


Figure 7: MRD 7000 Main Screen

Support

Reference the full User Manual for more information about operation or troubleshooting the unit.

Contact Sencore ProCare for support, if required.

Email: procare@sencore.com

Phone: +1-605-978-4600